

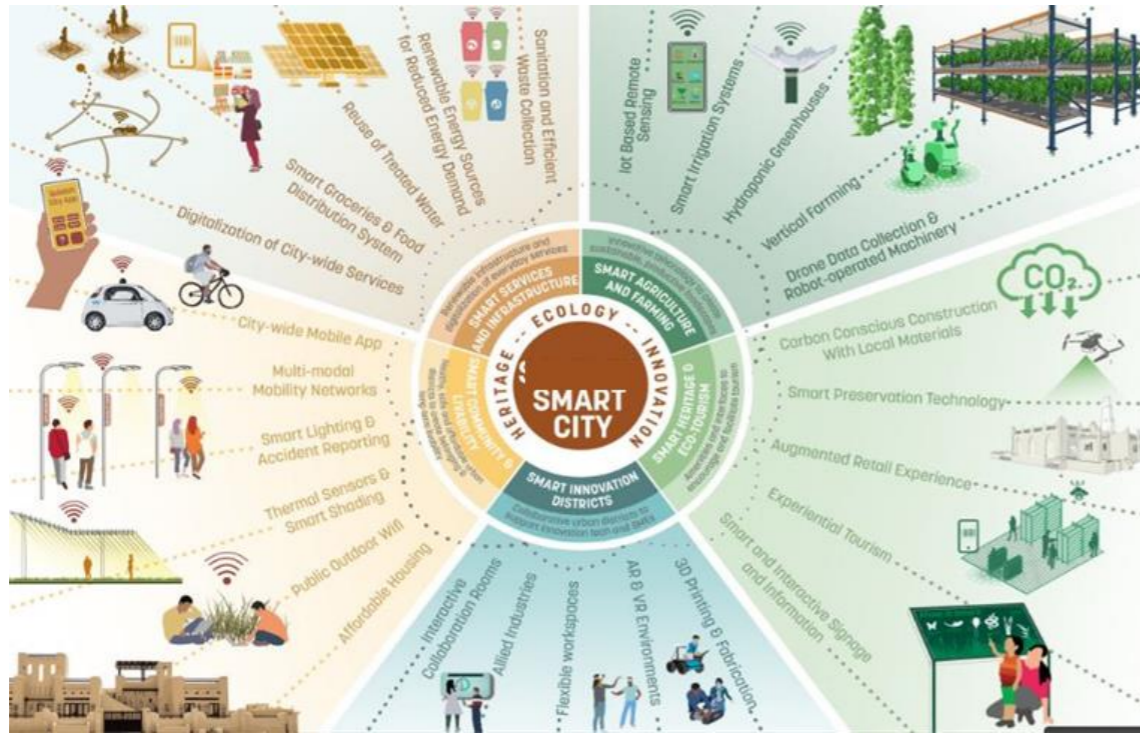
# Haitham Al Rawahi

Architect and Urban Planner  
Ministry of Housing and Urban Planning

# Sustainable smart cities



## Ingredients of Sustainable smart cities



<p><b>DIGITAL COMMUNITY</b> Municipal services that can be completed digital responding to citizens' needs more effectively.</p>	<p><b>SAFE CITY</b> Detect and mitigate threats at the earliest to reduce impact of damage with rapid incident response capability.</p>
<p><b>DIGITAL ECONOMY</b> Accelerate economic growth by digitalising people and businesses help businesses stay vibrant and competitive.</p>	<p><b>RESPONSIVE AWARENESS</b> Digitally connected sensory systems form the pulse of the city.</p>
<p><b>PREDICTIVE MAINTENANCE</b> Smart infrastructure and utilities ensure sustainable, green and safe city operations where maintenance is performed in a timelier manner preventing huge repair</p>	<p><b>SUSTAINABLE &amp; AUTONOMOUS EXPERIENCE</b> Services that can be sustainable and completely automated.</p>



# The key ingredients of any sustainable cities



# Cerdà's utopía plan for Barcelona



Park service areas, 5, 10 and 20 minutes



Market service areas



School service areas



Cerdà hospitals allocation of demand within 30 minutes distance



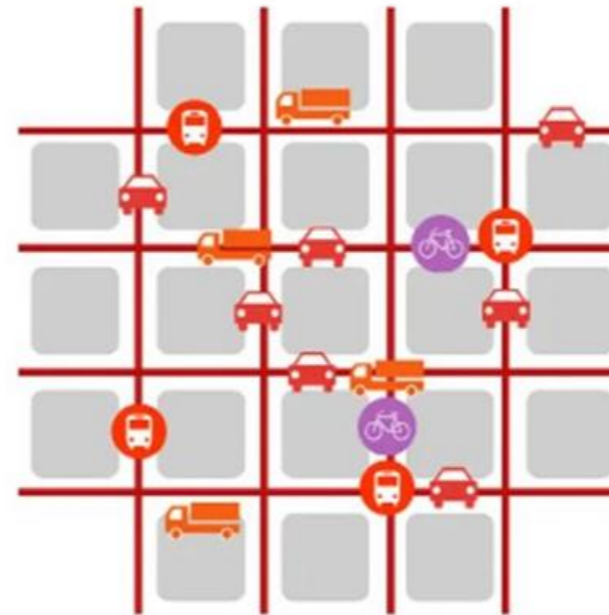
# Super Blocks

2016—nine-block grids that reclaim streets from cars and turn them into pedestrian-first zones



## SUPERBLOCKS MODEL

Current Model



Superblocks Model



-  PUBLIC TRANSPORT NETWORK
-  PRIVATE VEHICLE PASSING
-  DUM PROXIMITY AREA
-  BICYCLES MAIN NETWORK (BIKE LANE)
-  RESIDENTS VEHICLES
-  ACCESS CONTROL
-  BICYCLES SIGNPOSTS (REVERSE DIRECTION)
-  URBAN SERVICES AND EMERGENCY
-  BASIC TRAFFIC NETWORK
-  FREE PASSAGE OF BICYCLES
-  DUM CARRIERS
-  SINGLE PLATFORM (PEDESTRIANS PRIORITY)

# Cities that could develop supper block



# Mutrah

## Mutrah could become a supper block

