

Transformational Change: Building a Collaborative Future



TECHNOLOGY, SUSTAINABILITY & HUMANITY

27 & 28 OCTOBER 2025

MADRID, SPAIN



28th October 2025

José Miguel Lameiras

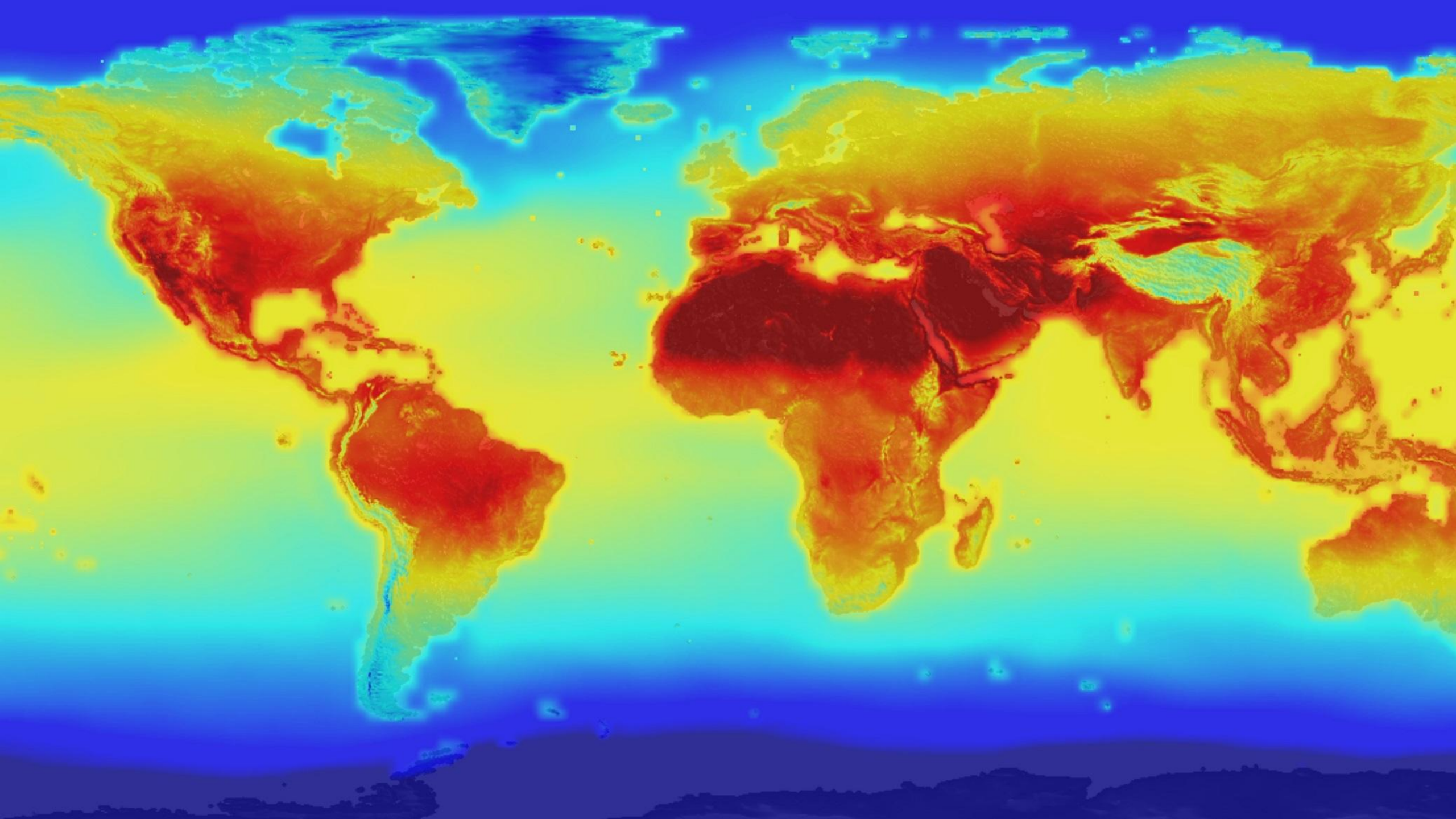
Assistant Professor in Landscape Architecture, Faculty of Sciences, University of Porto

Researcher at the Research Center in Biodiversity and Genetic Resources (CIBIO-BIOPOLIS)



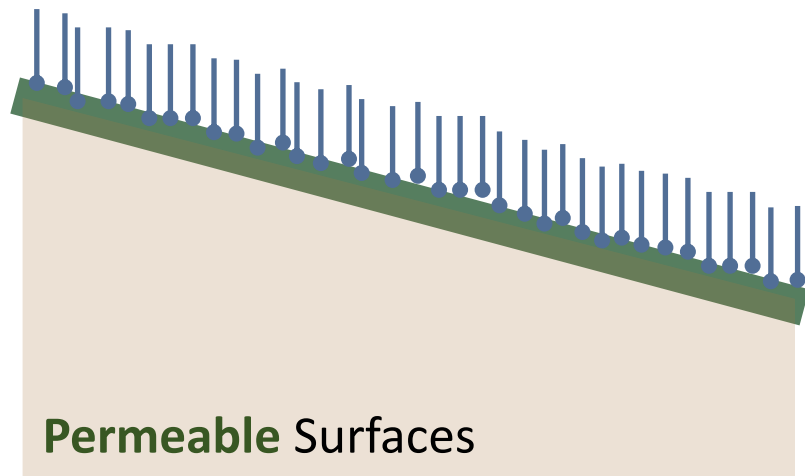
DESIGNING WITH NATURE

Nature-Based Solutions for Resilient Landscapes

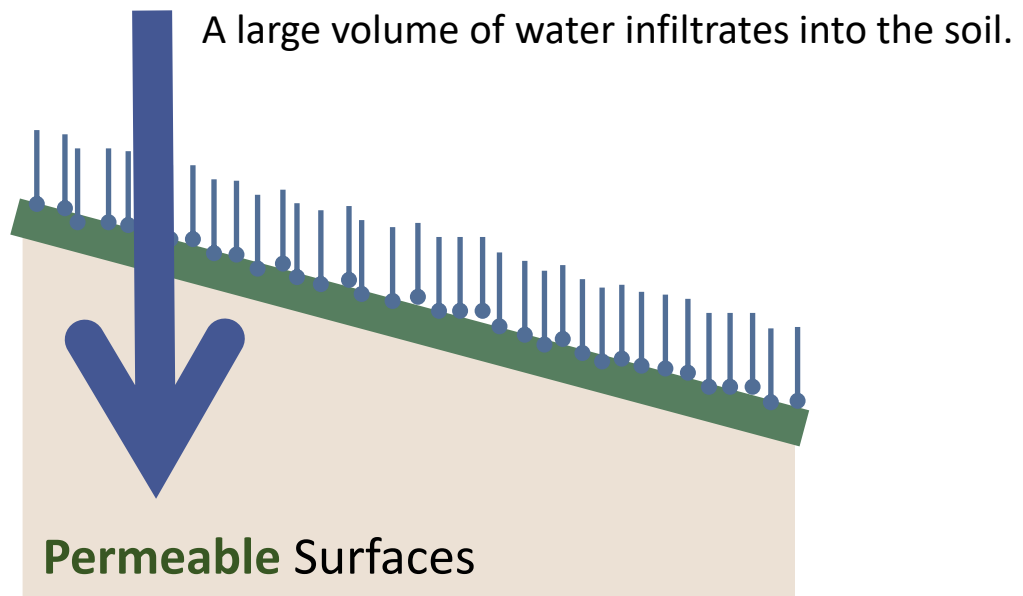


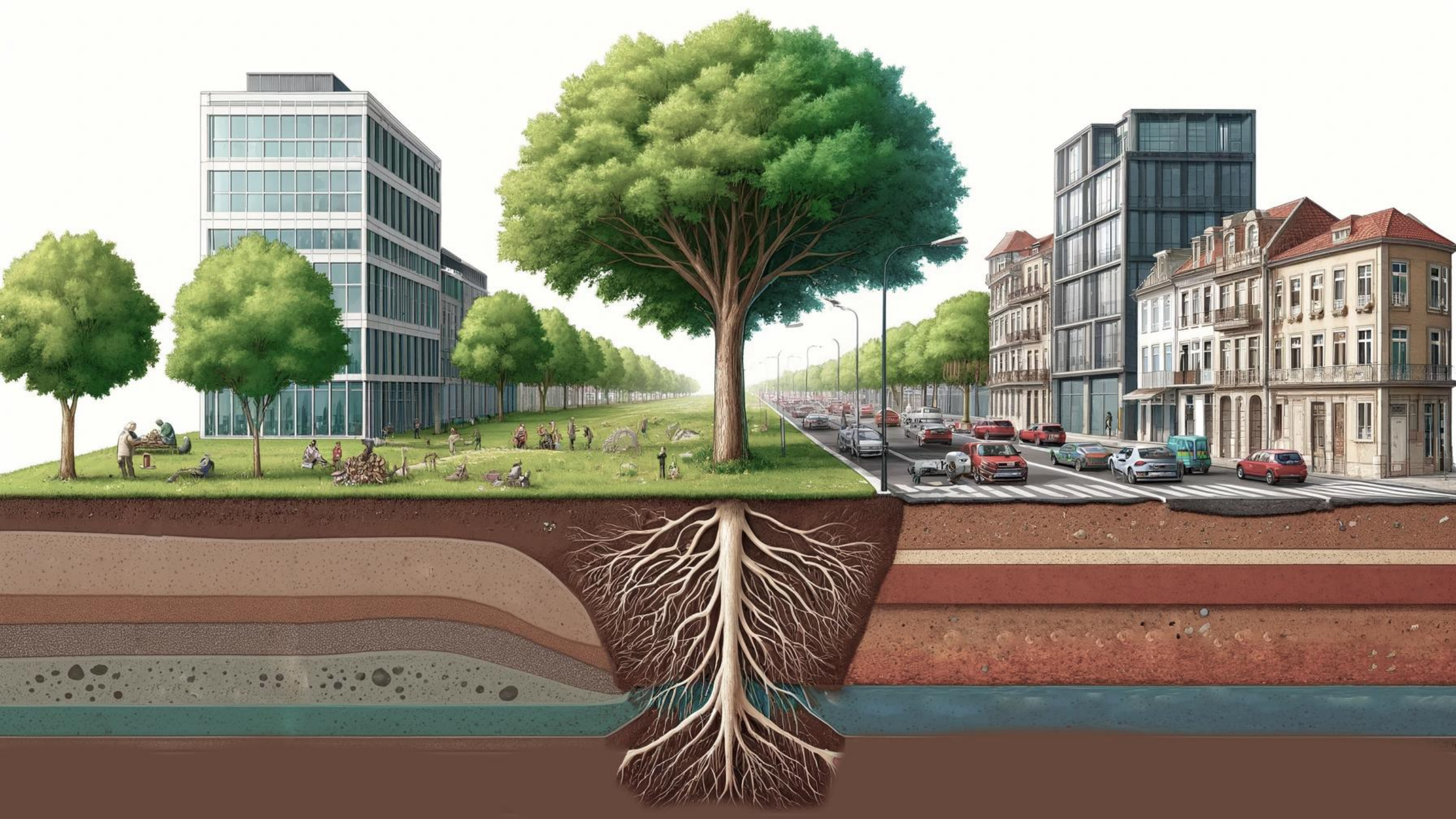


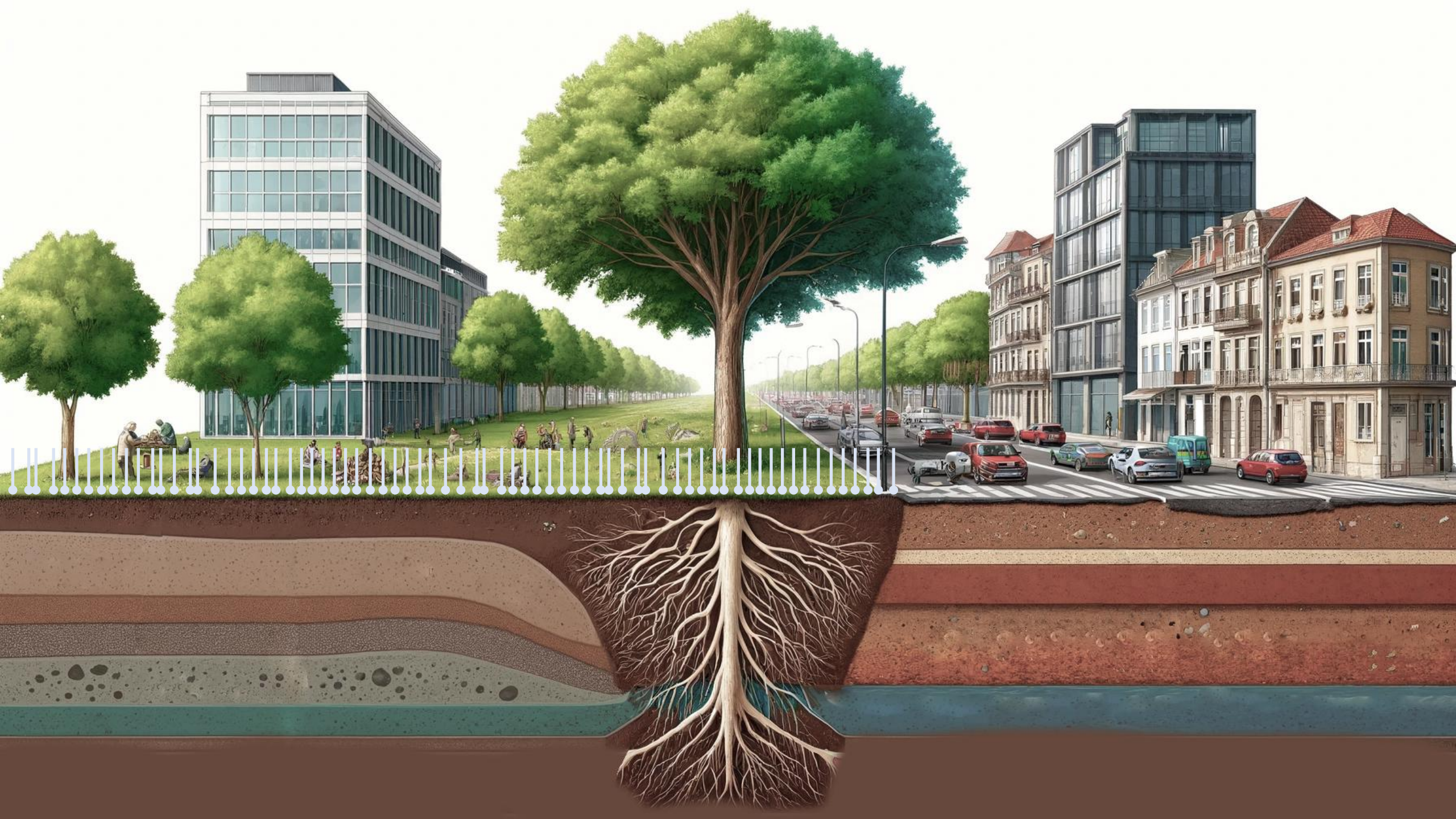
Make **cities** more **permeable** and store **water** in the **ground**

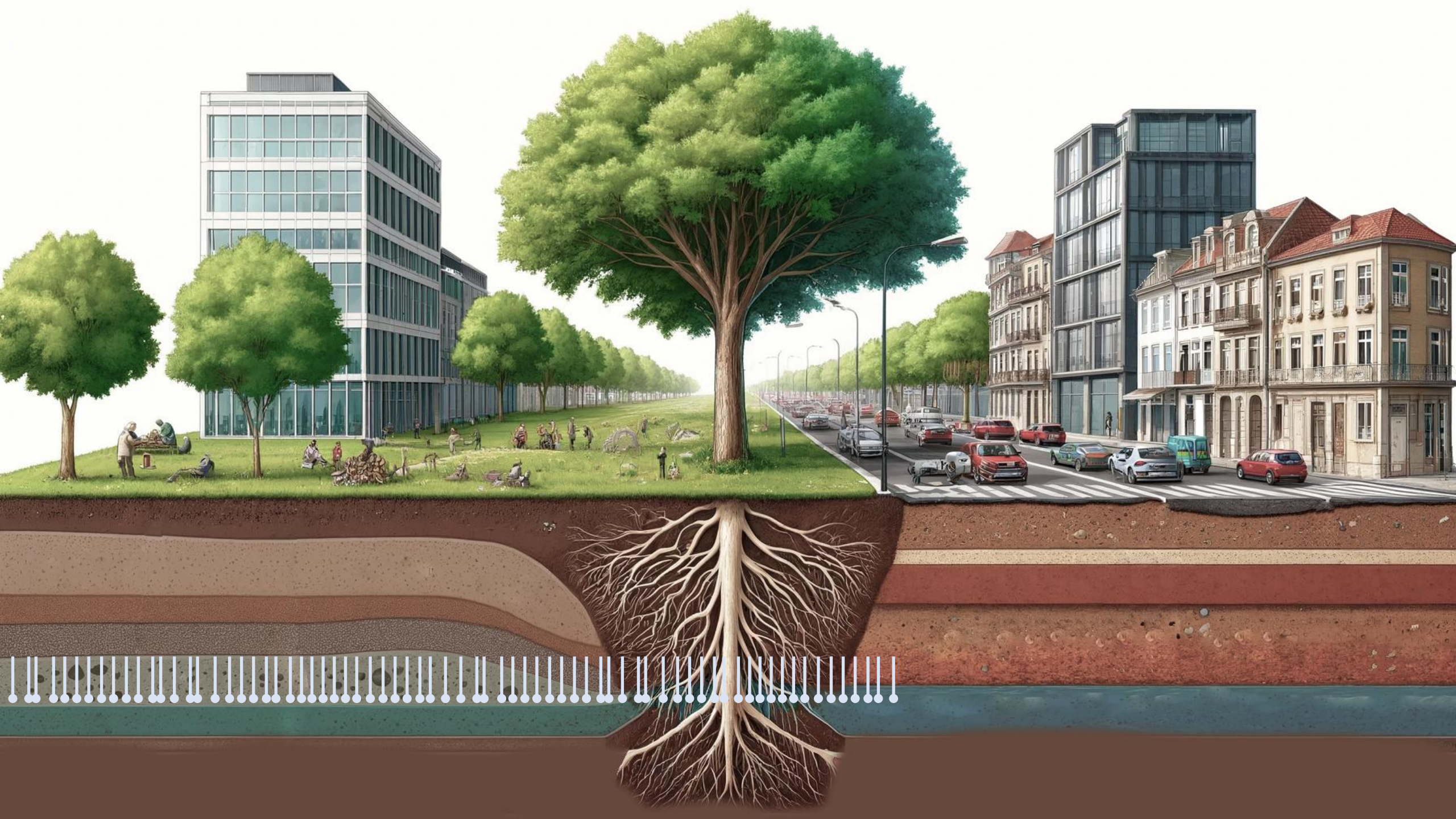


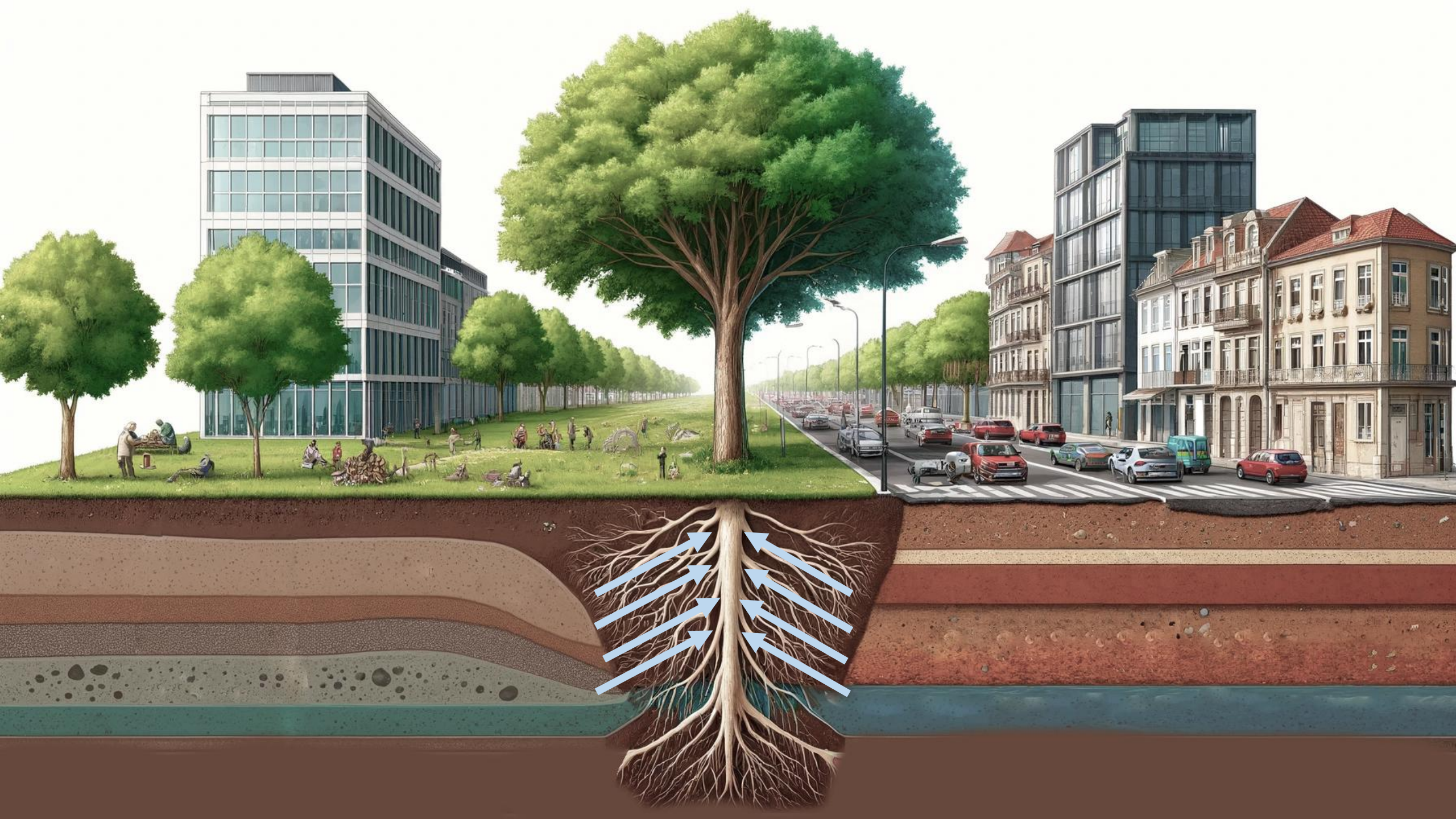
Permeable Surfaces

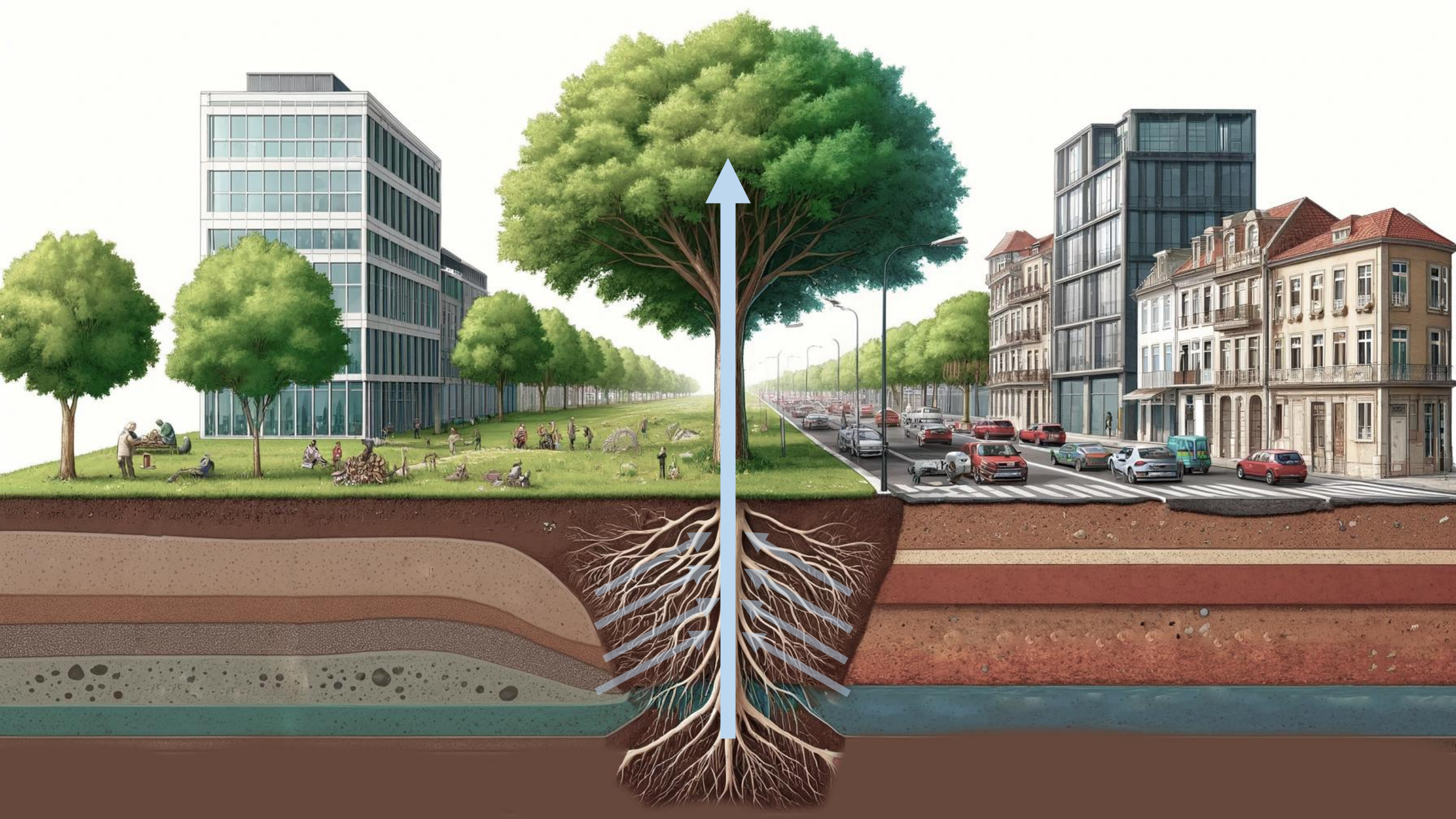


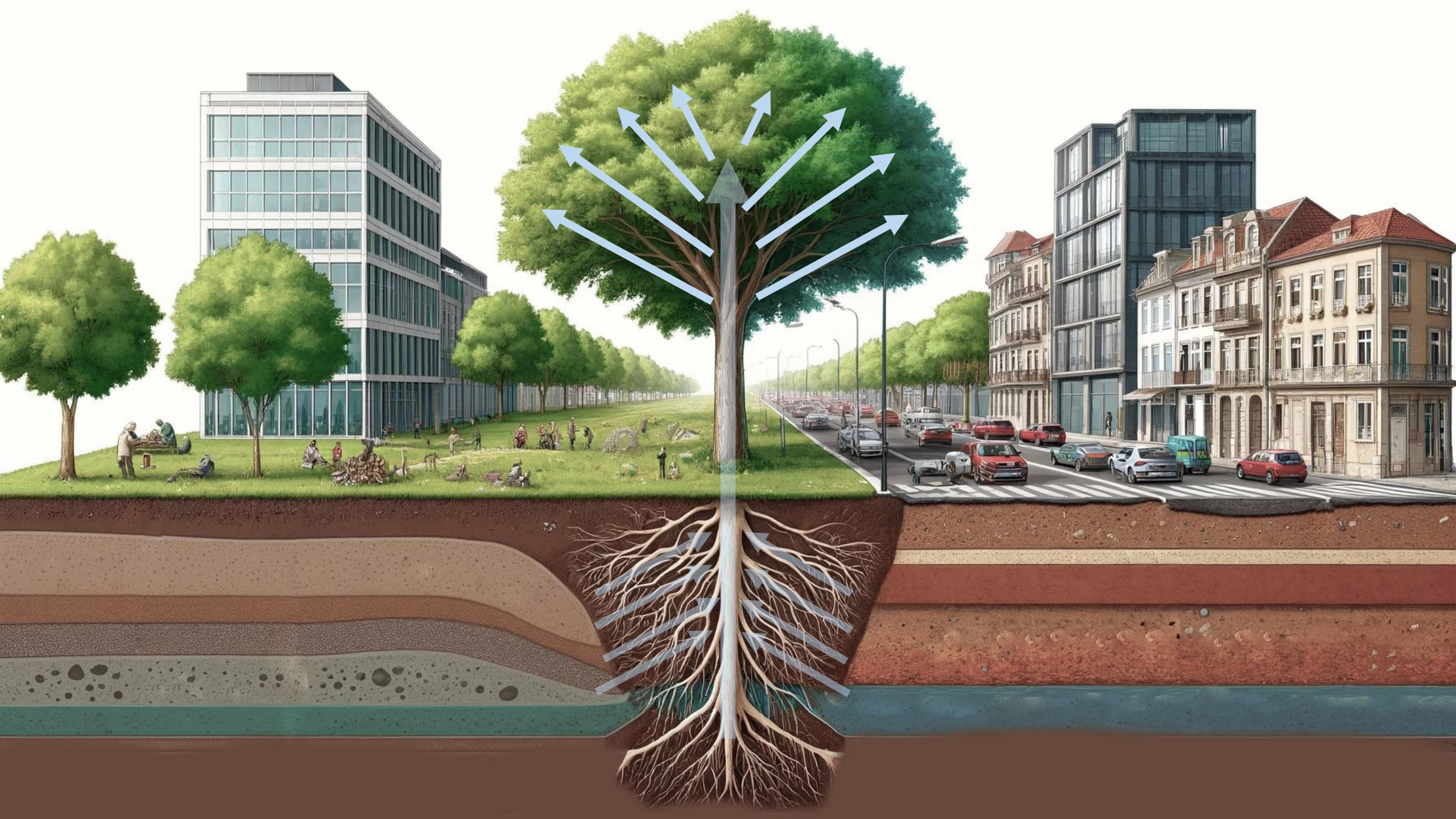


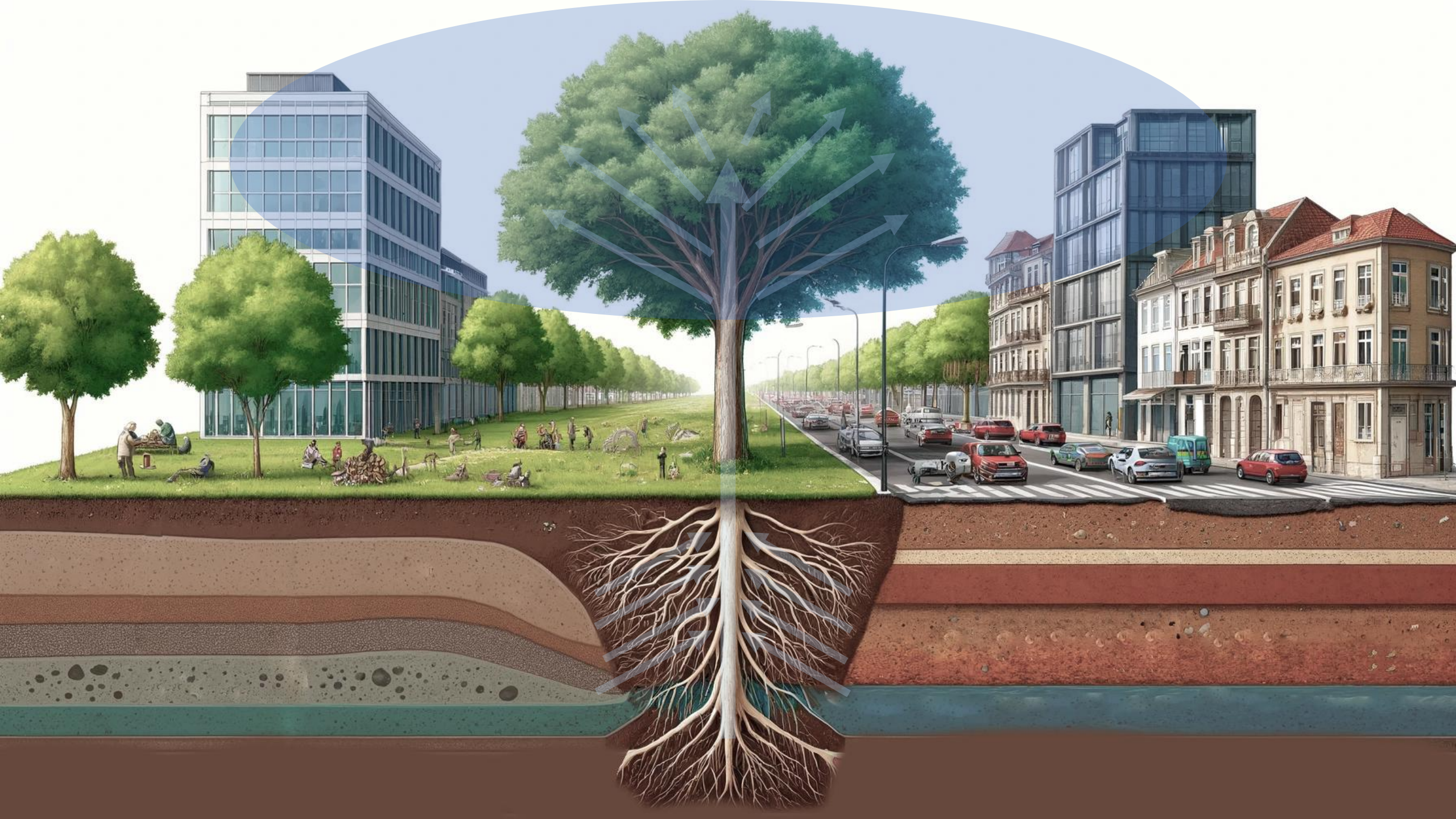


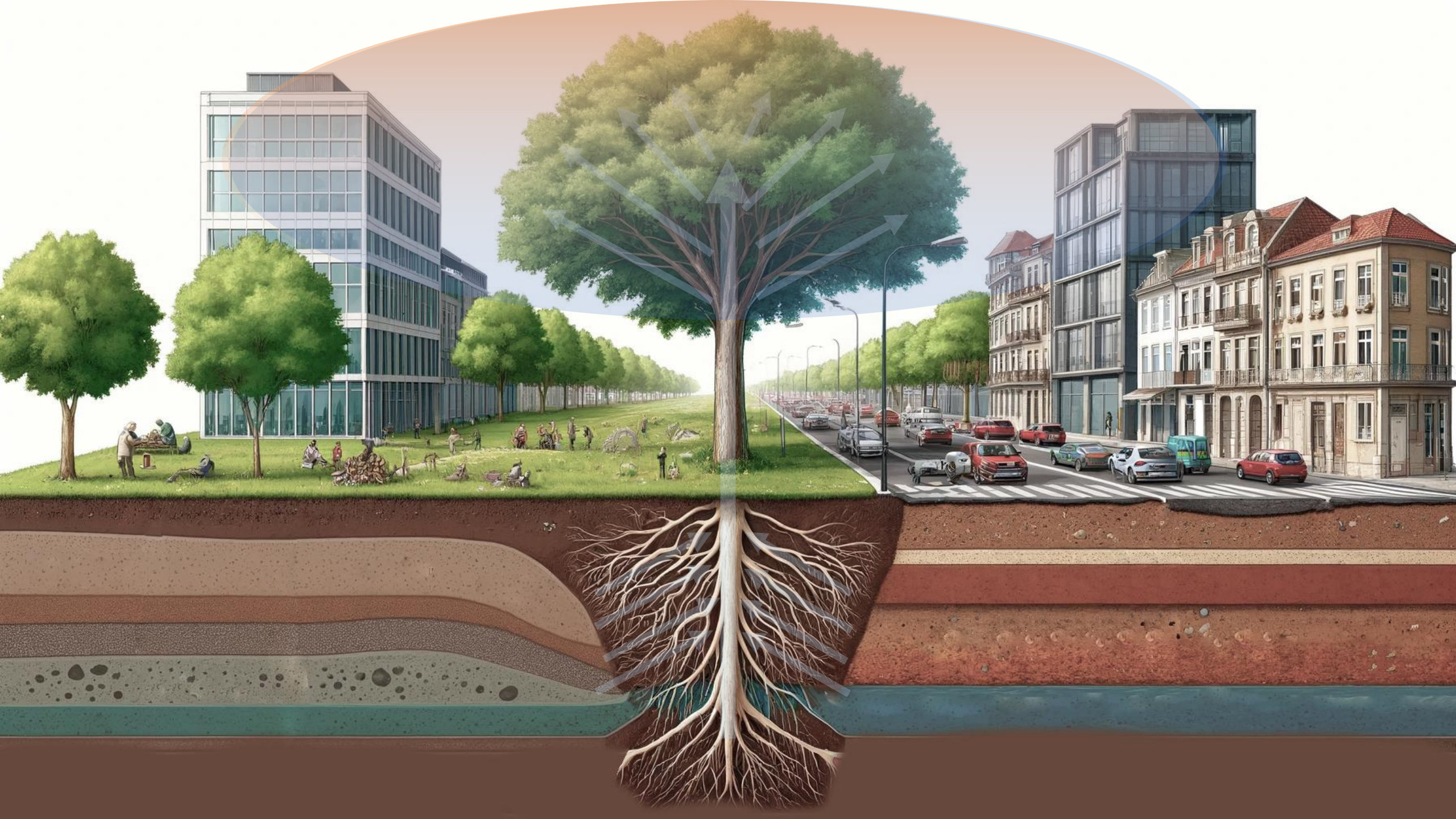












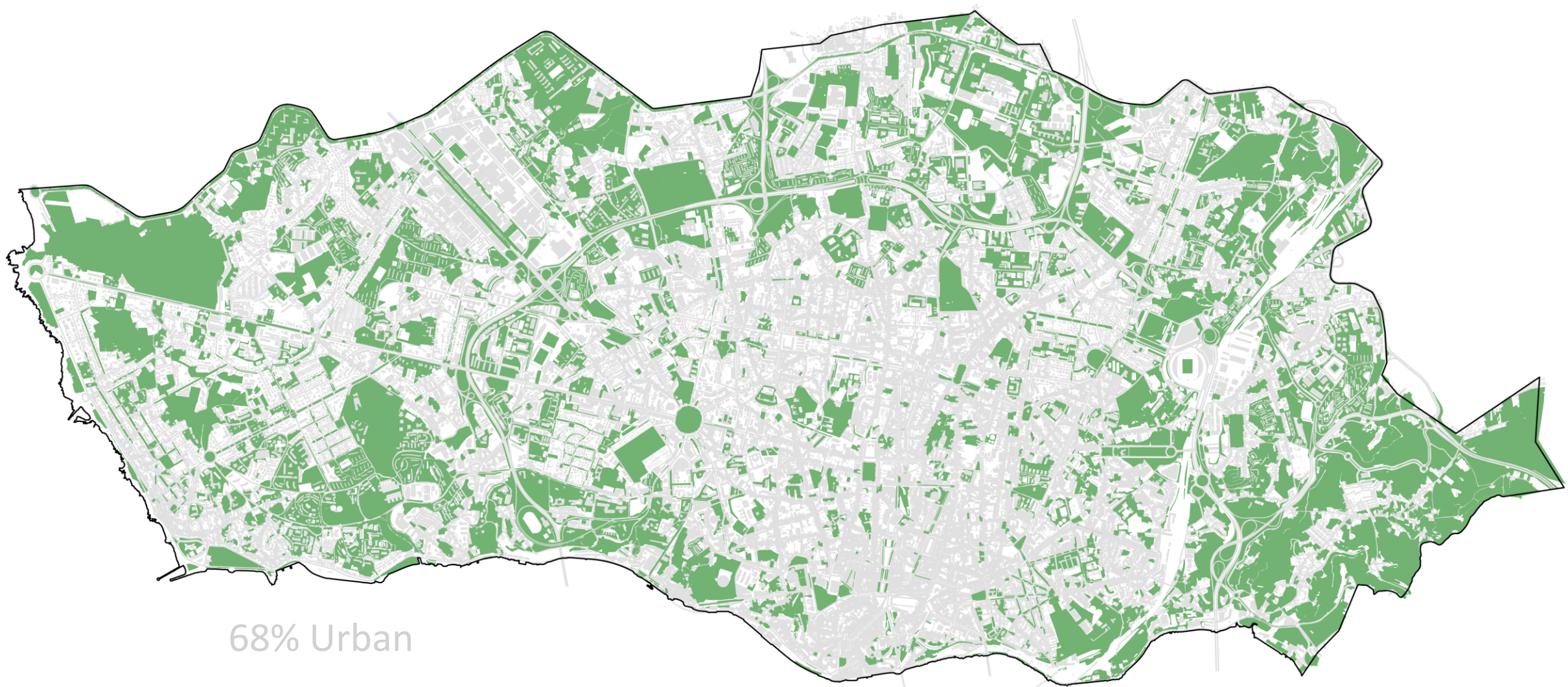


Between 2022 and 2024, Catalonia faced 1,000 days of drought. Groundwater reserves reached critical levels, dropping to just 16% of their capacity.



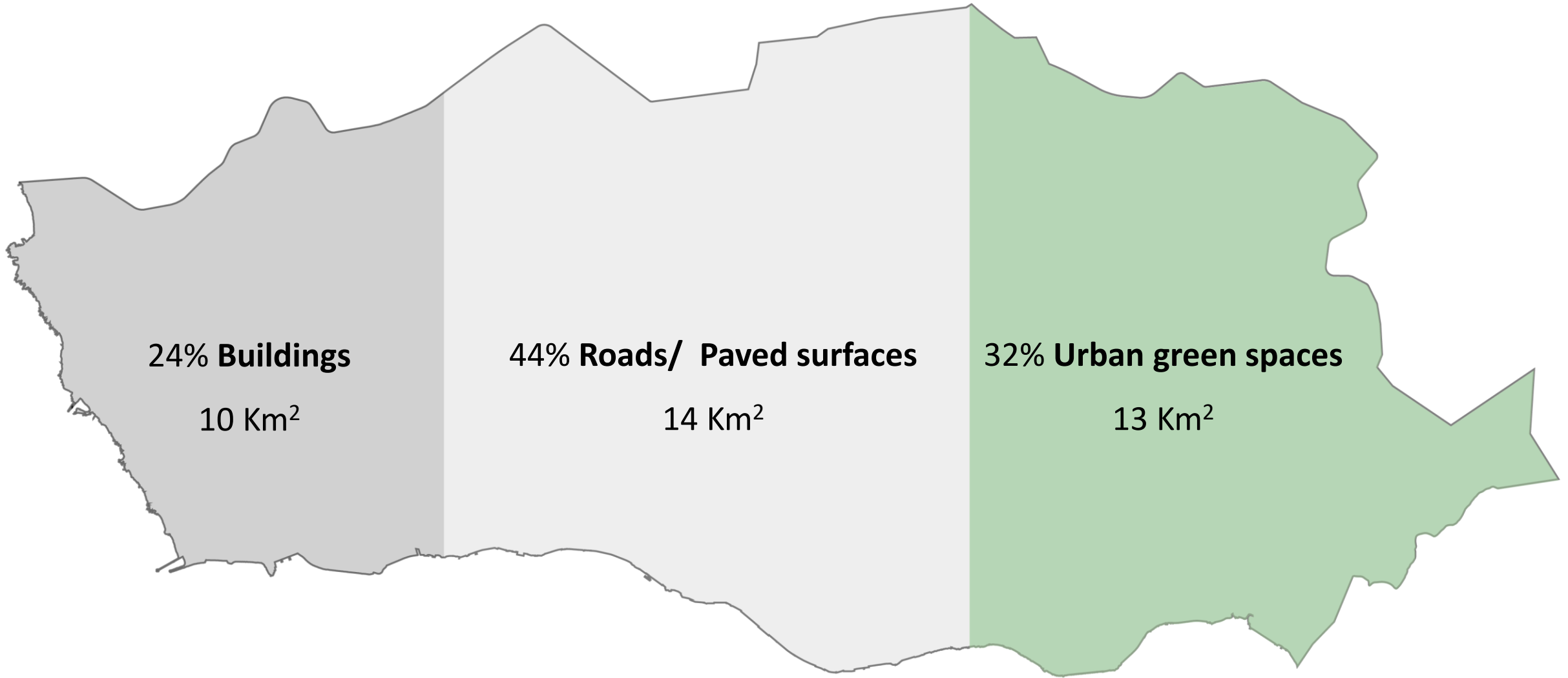


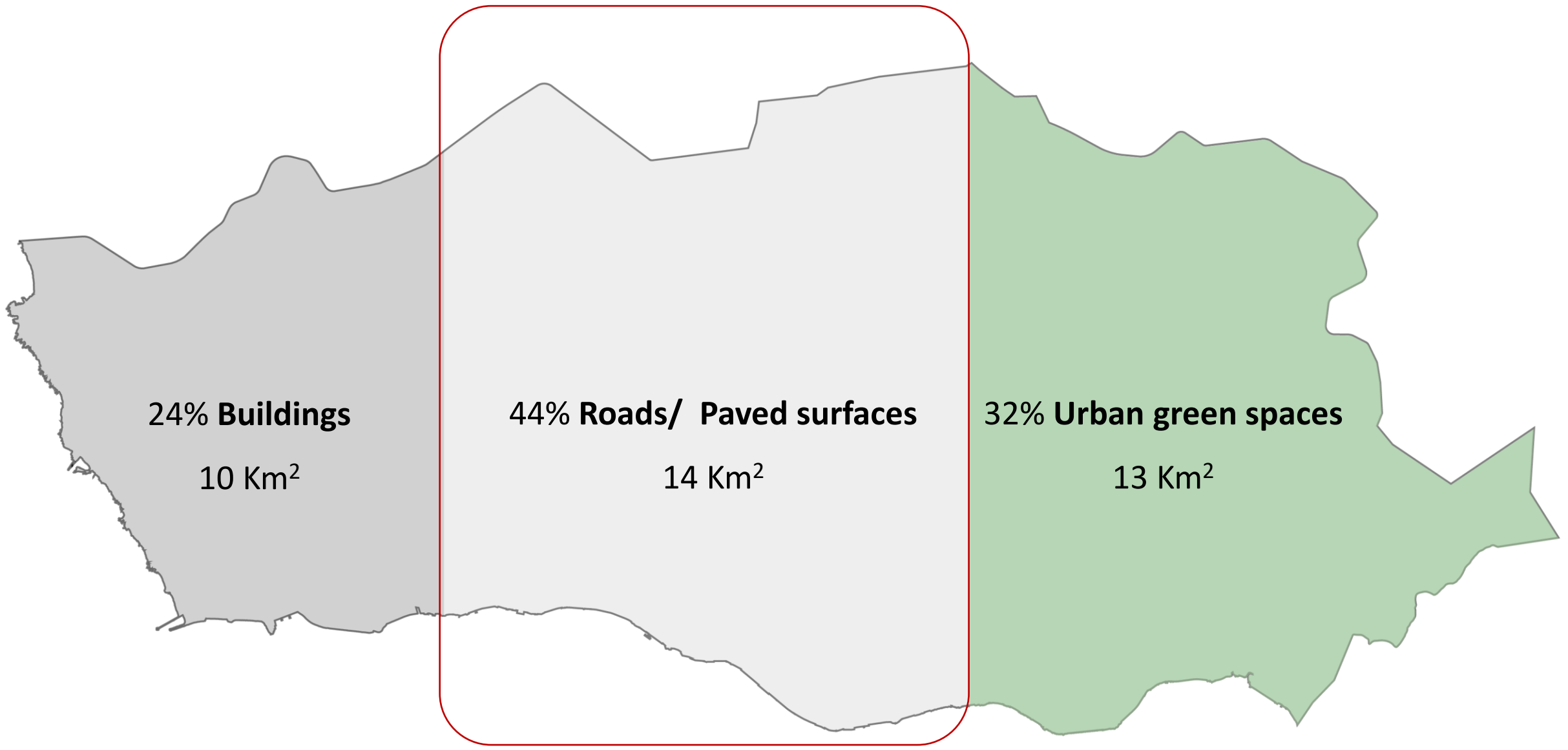




68% Urban

32% Green Spaces





Paris quer remover 40% do asfalto para enfrentar picos de calor

Para combater a crise climática, Paris planeja plantar 170.000 árvores até 2026, eliminar lugares de estacionamento e transformá-los em espaços verdes até 2030 e remover 40% do asfalto.

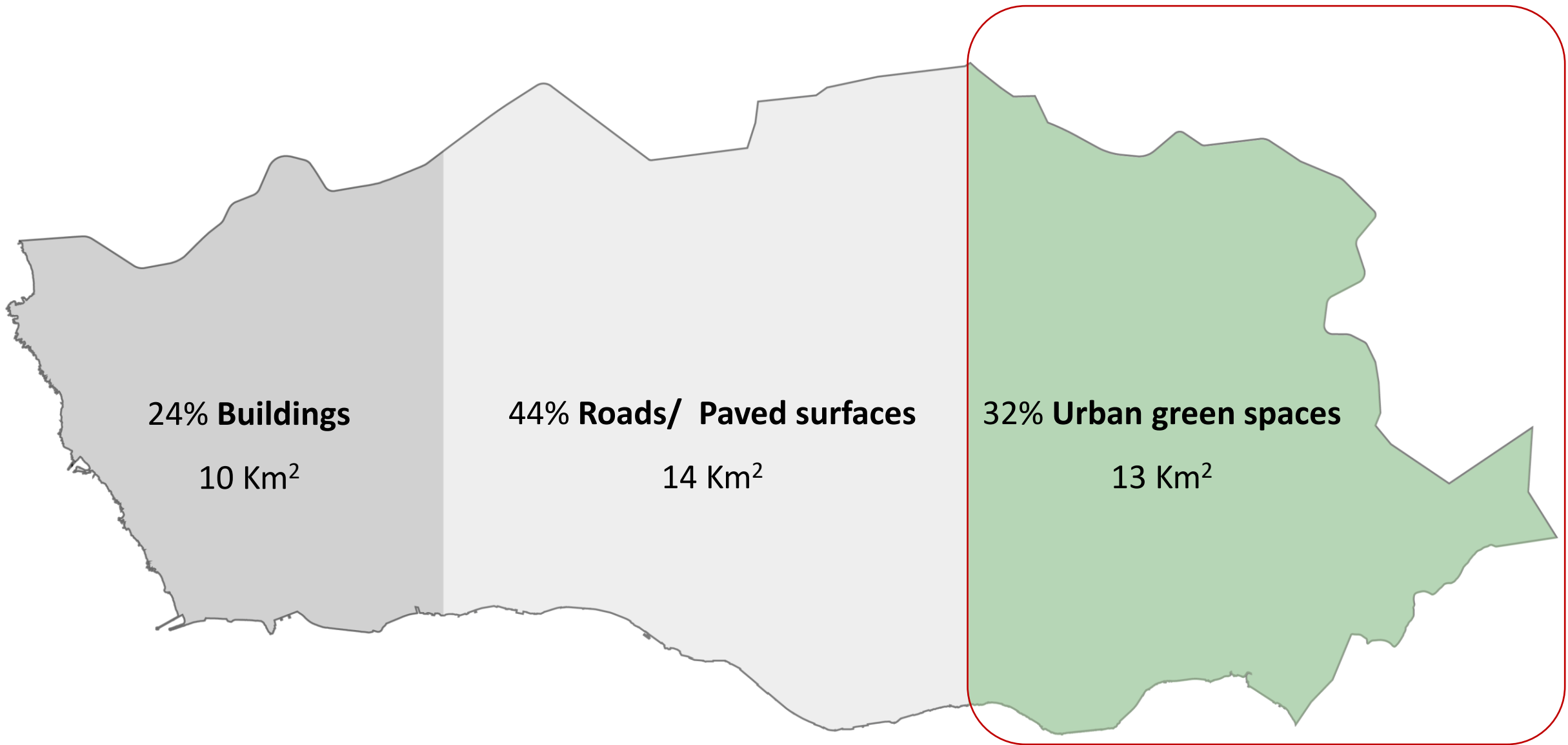
Lusa

30 de Agosto de 2023, 11:05



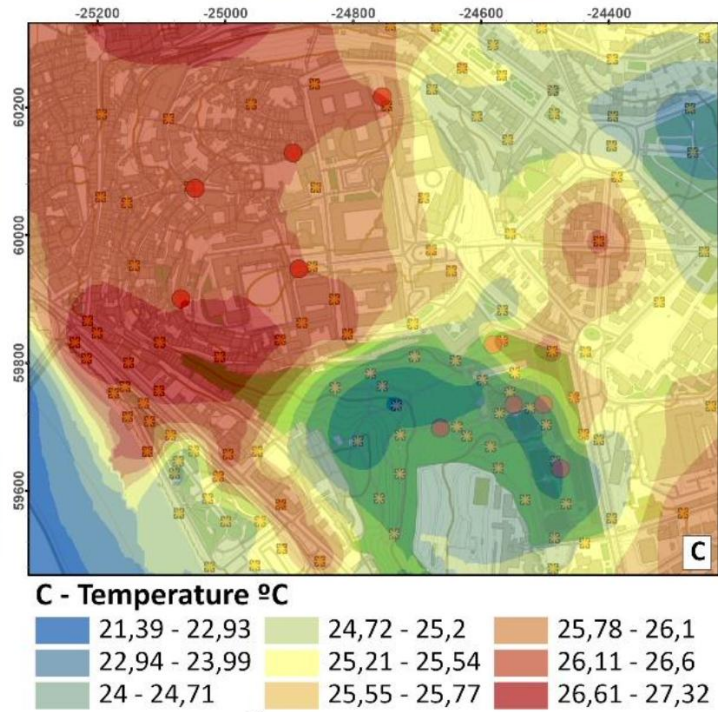
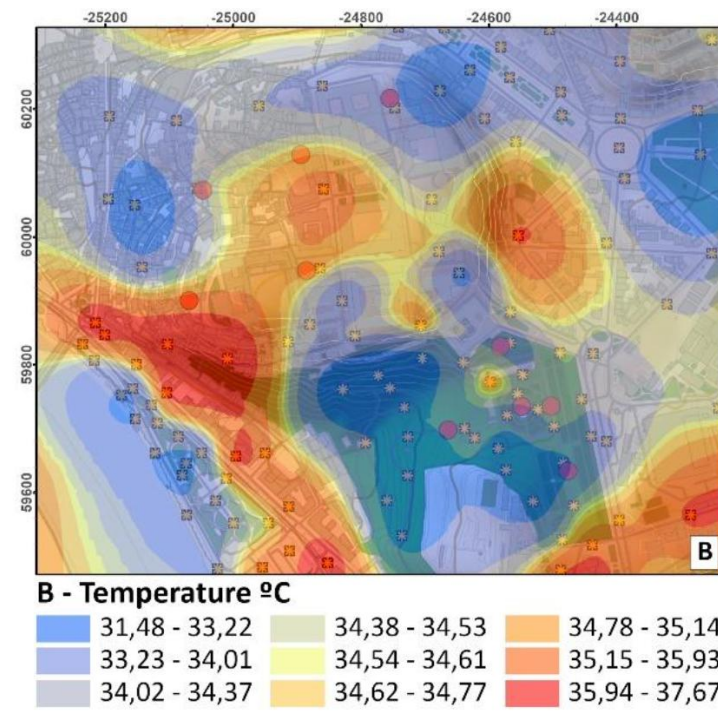
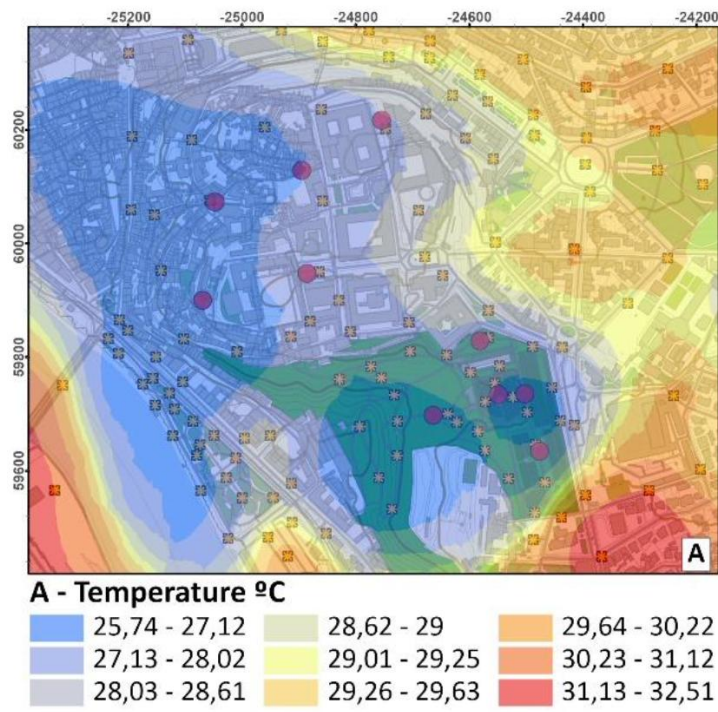
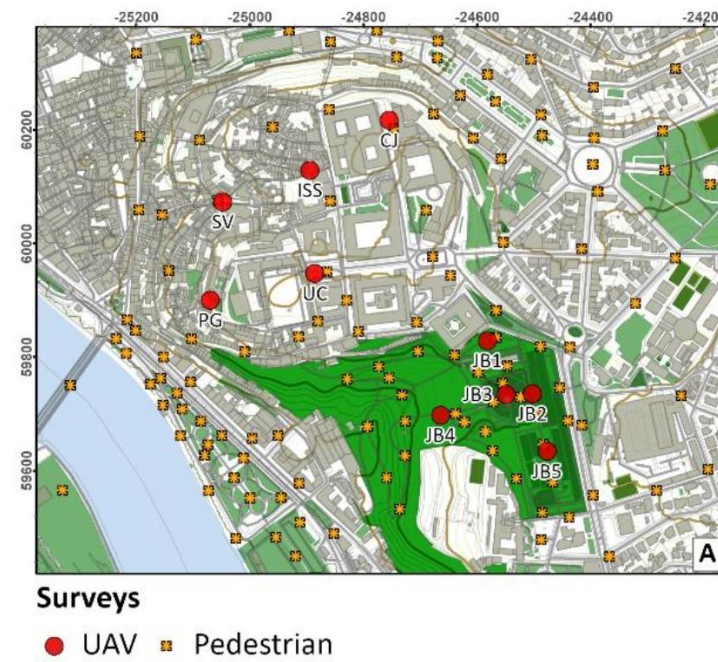
Menos asfalto, mais árvores – Paris está a viver uma "corrida contra-relógio" para combater a crise climática e as ondas de calor extremo são o "desafio número um" para a cidade

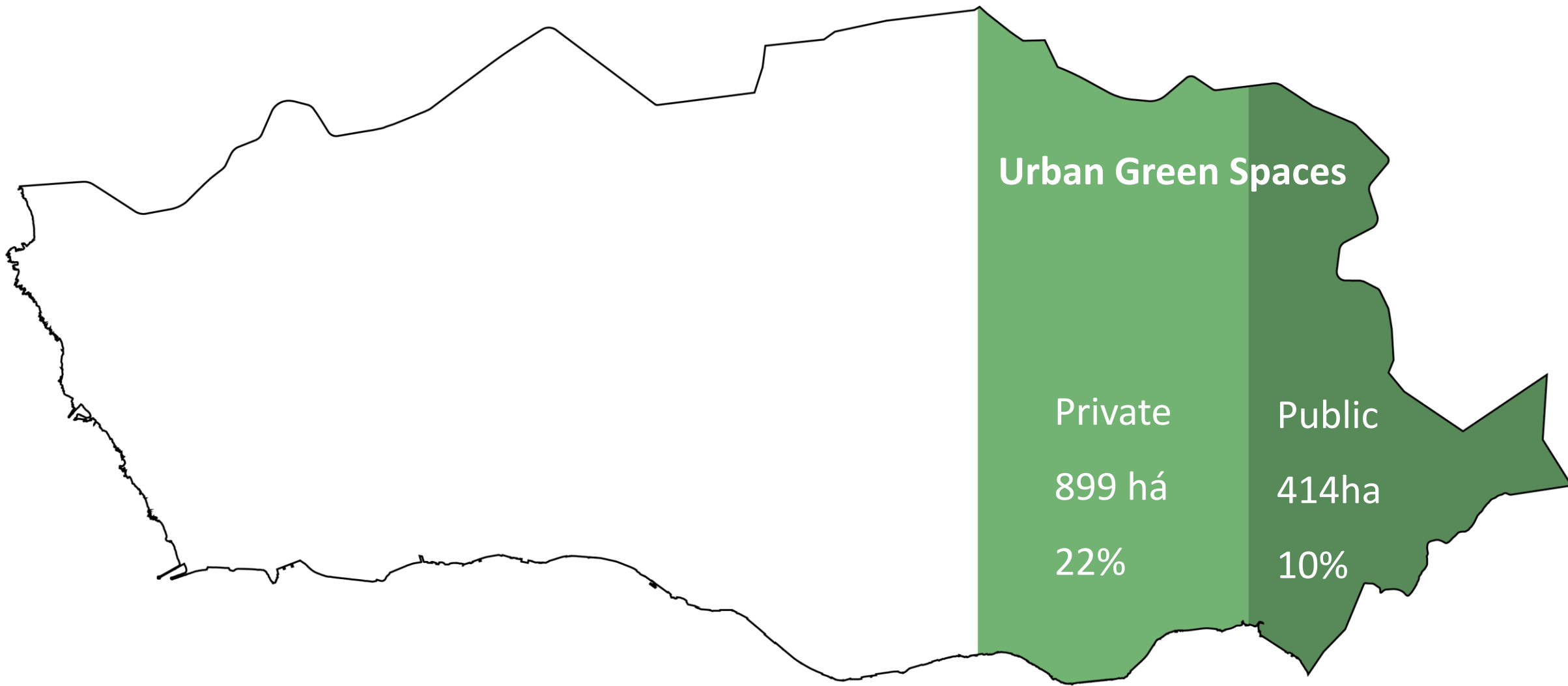
COCOPARISIENSE/PIXABAY



More than 4% of deaths in cities during the summer months are due to the urban heat island effect. One third of these deaths could be prevented if a tree canopy cover index of 30% were achieved.

Barcelona Institute for Global Health (ISGlobal)





Urban Green Spaces

Private

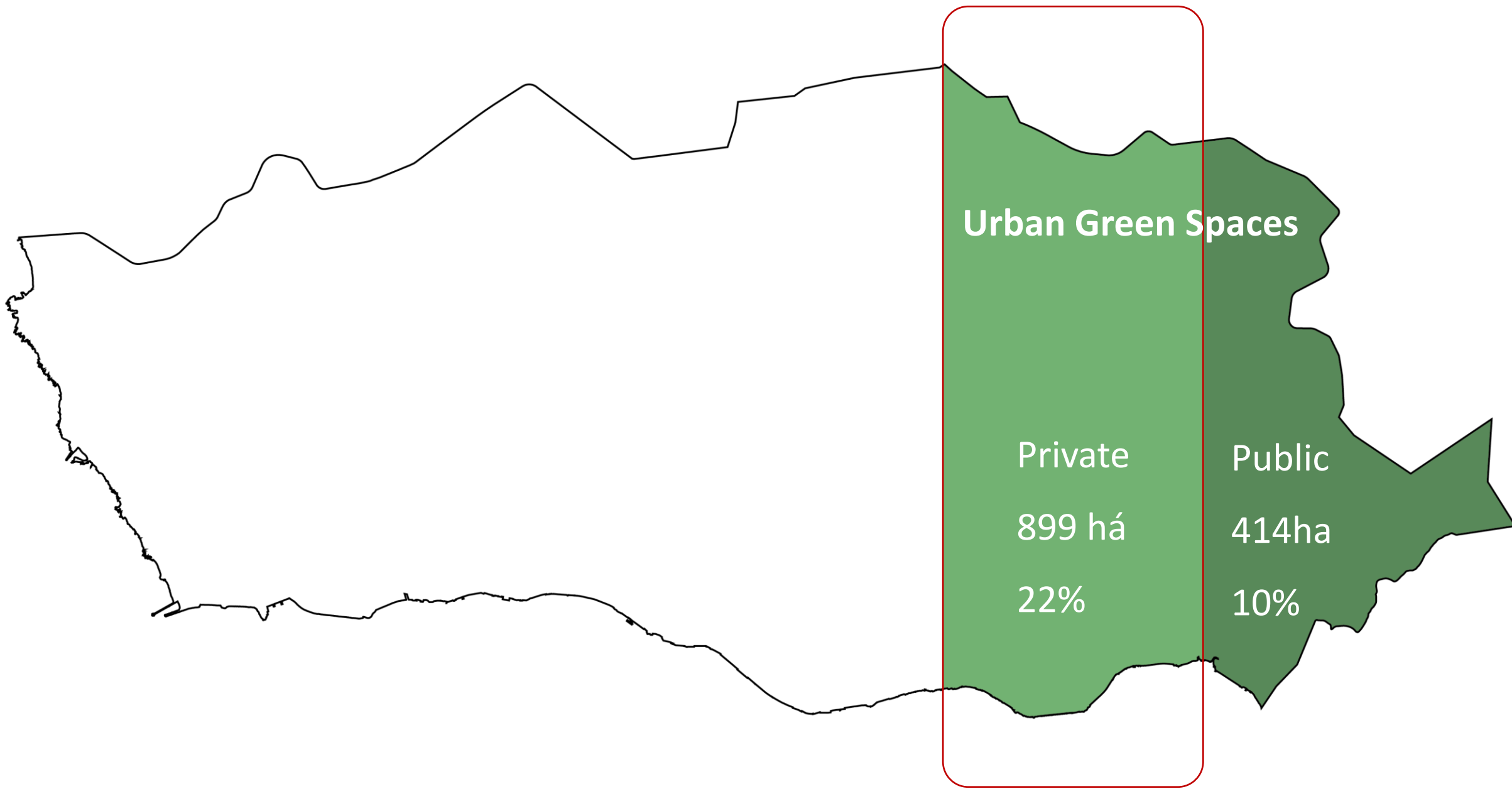
899 há

22%

Public

414ha

10%





Eurostars Das Artes

Centro Comercial Bombarda

Rota do Chá

Antigo Velódromo Rainha D. Amélia

Museu Nacional de Soares dos Reis

Antiga Quinta do Carregal

R. de Clemente Meneres

Jardim do Carregal

RUA Tapas&Music Bar

Banco De Materiais

Praça de Carlos Alberto

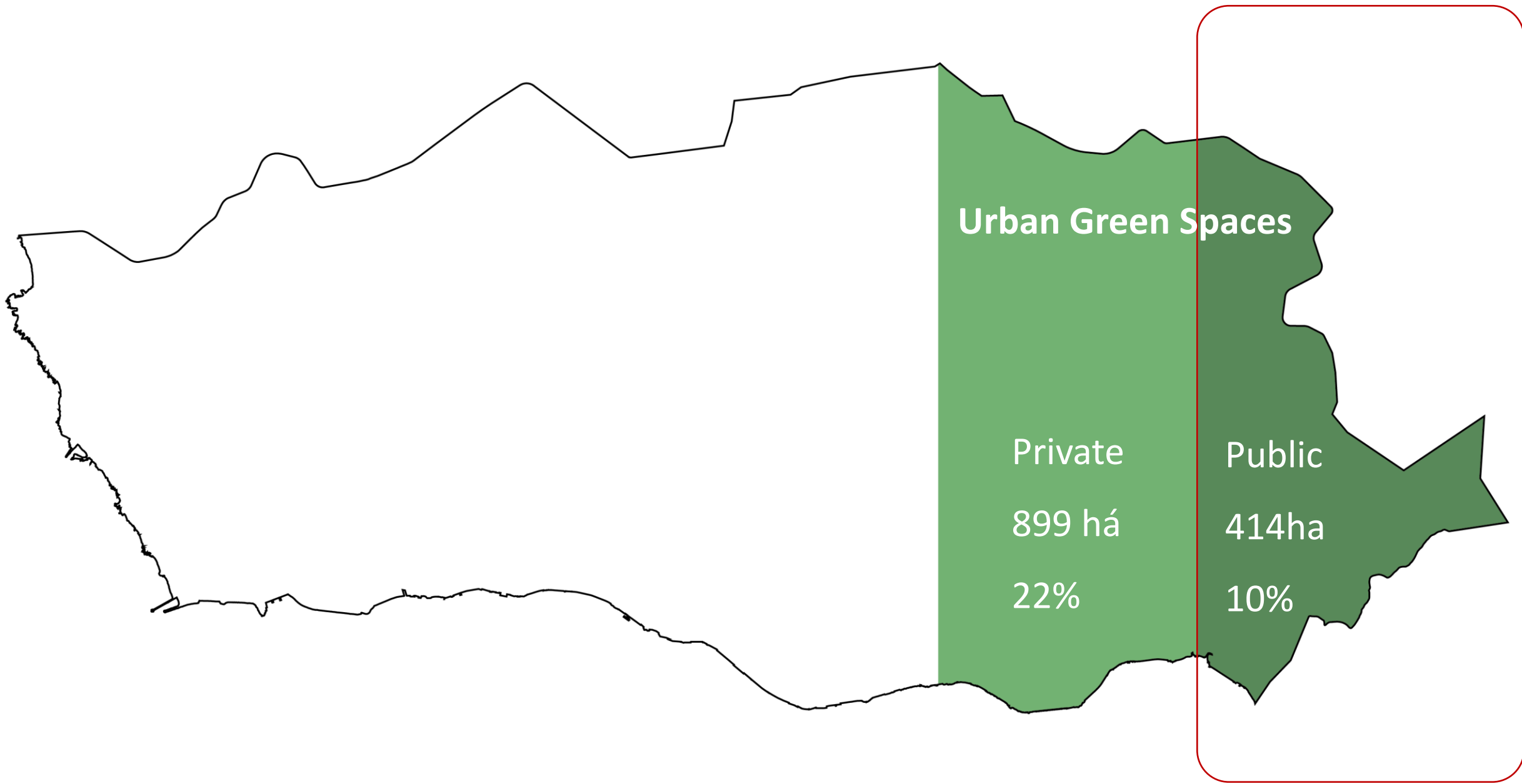
Moustache Coffee House

PILOT Hostel

Gomes

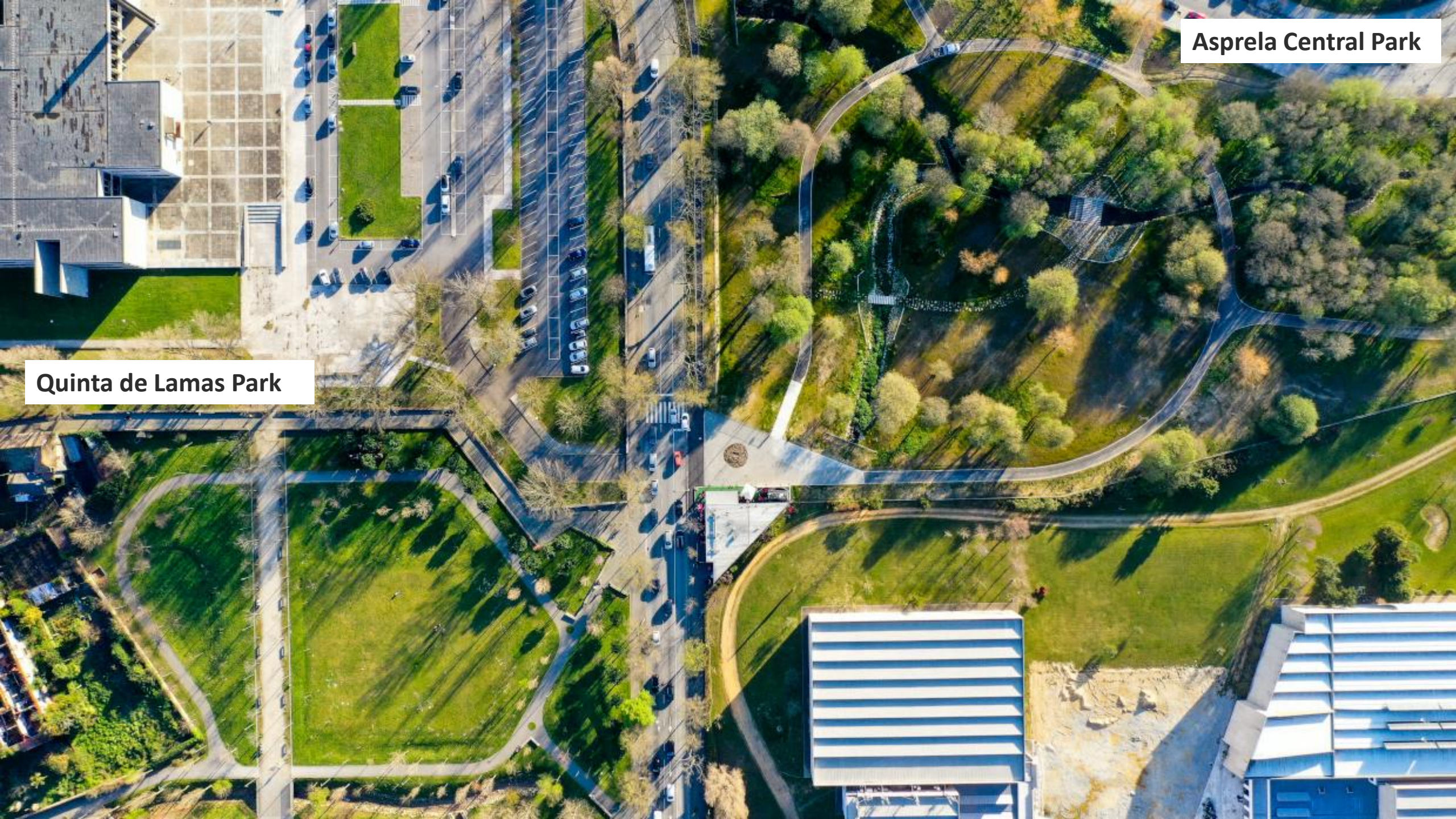




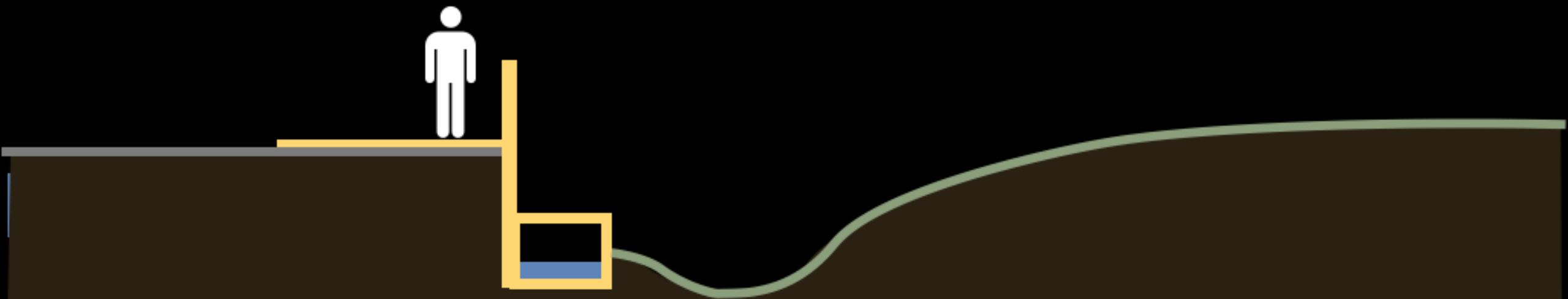


Asprela Central Park

Quinta de Lamas Park



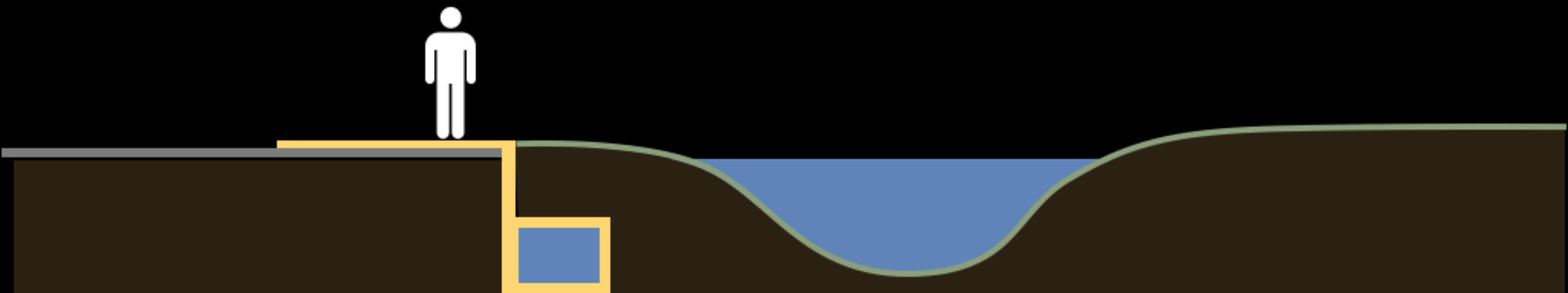




Existing situation



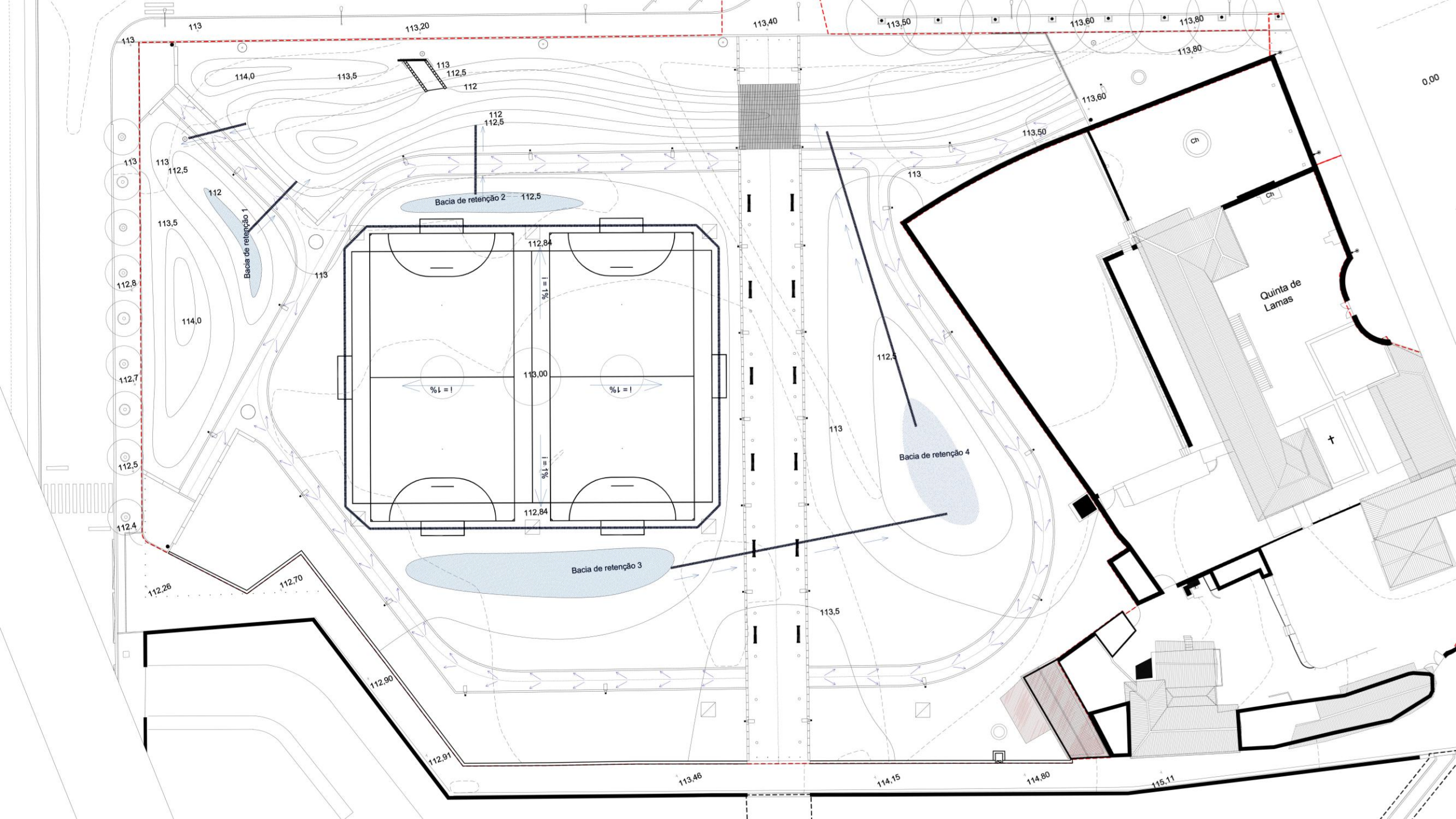
Proposed situation



In a storm event











19 Outubro 2019

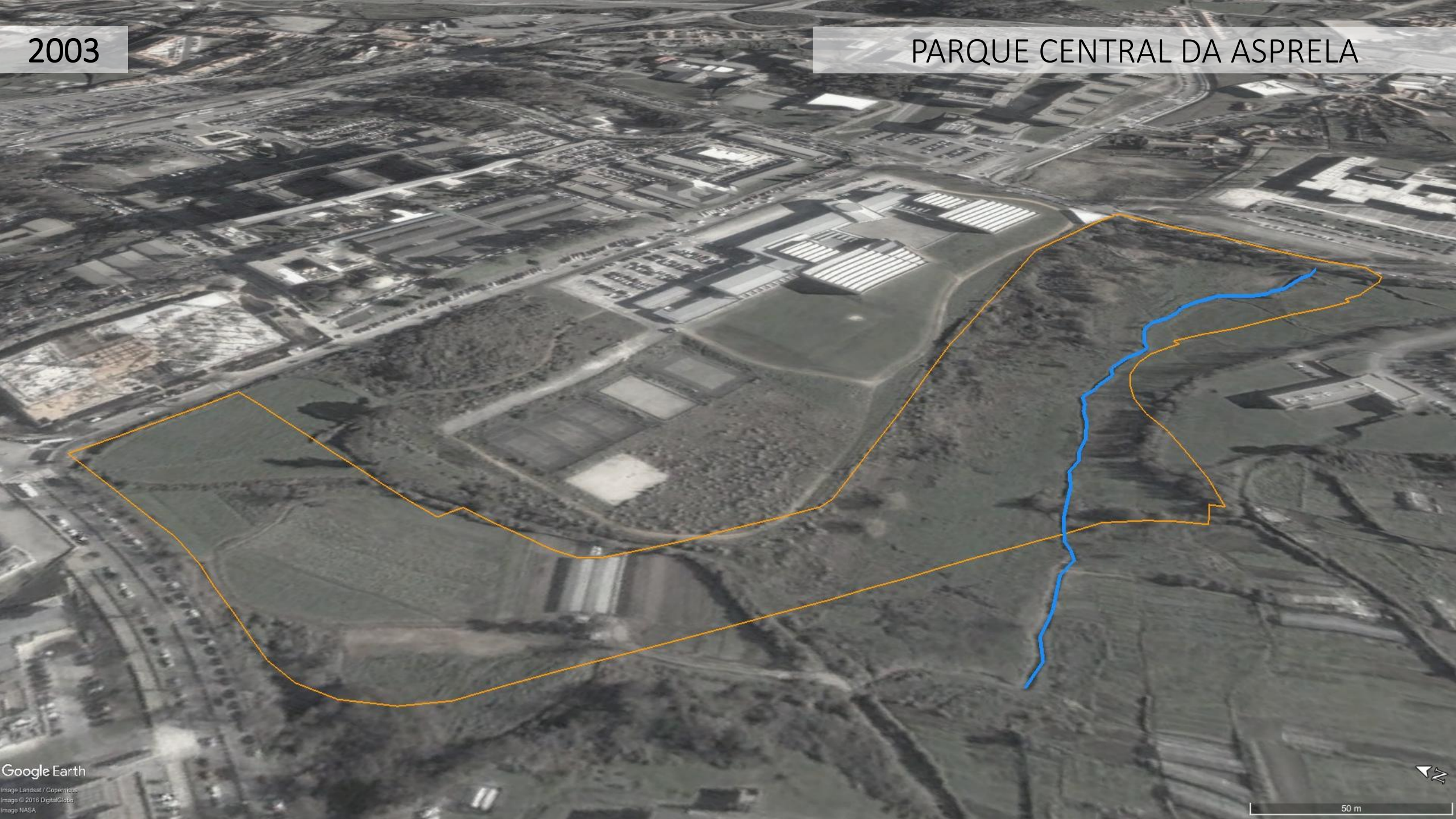




23 Novembre 2022

2003

PARQUE CENTRAL DA ASPRELA



2004



2006



2013









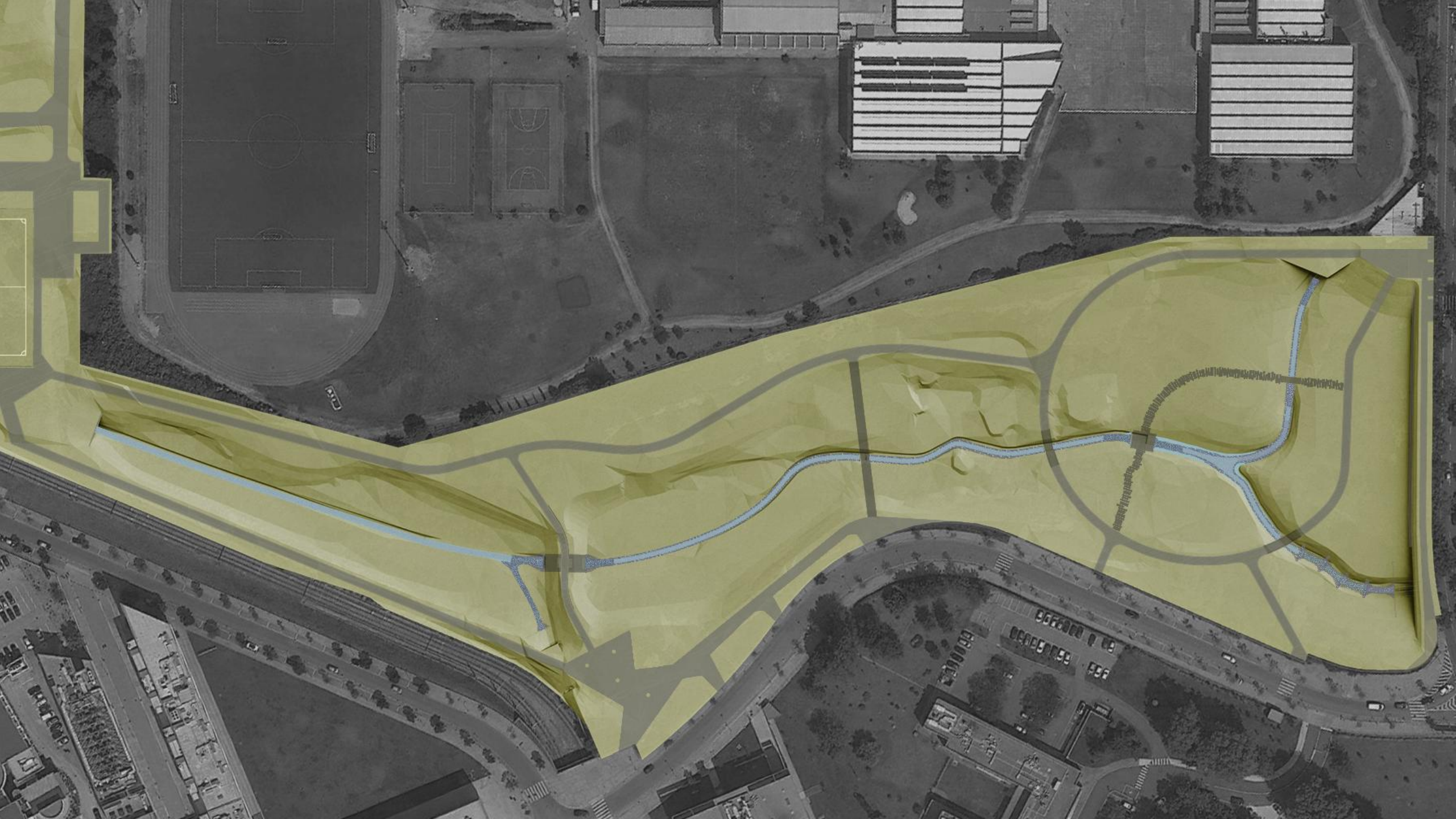
Bacia Hidrográfica da Ribeira da Asprela

Bacia de captação da área de intervenção

Limite da área de intervenção









10.000 M3

ALFREDO

UPTEC

ALLEN

RUA

JULIO

AMARAL

DE

CARVALHO

IPATIMUP

FACULDADE DE DESPORTOS

RUA

DO





